



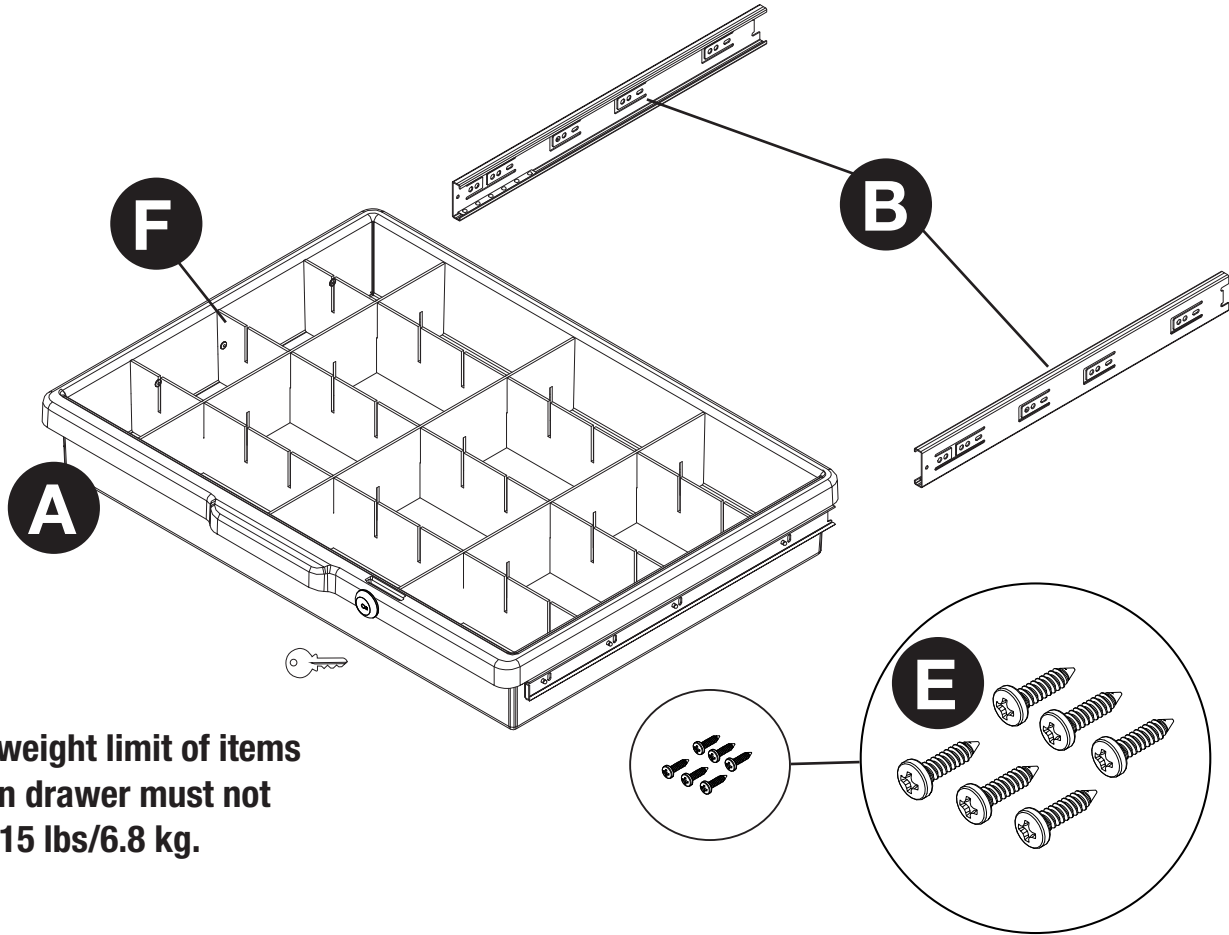
To learn about other Suncast products, please call
1-855-477-1260 or 1-630-879-2050.



Product Feedback? Go To: Suncastcommercial.com/feedback
OR email us at: feedback@suncastcommercial.com

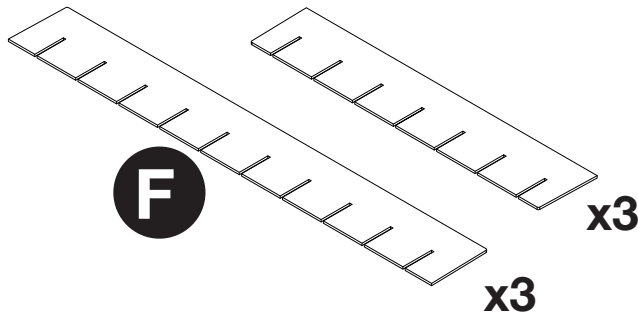
ITEM NUMBER: HKCDRW2

PARTS

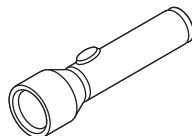
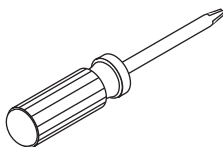


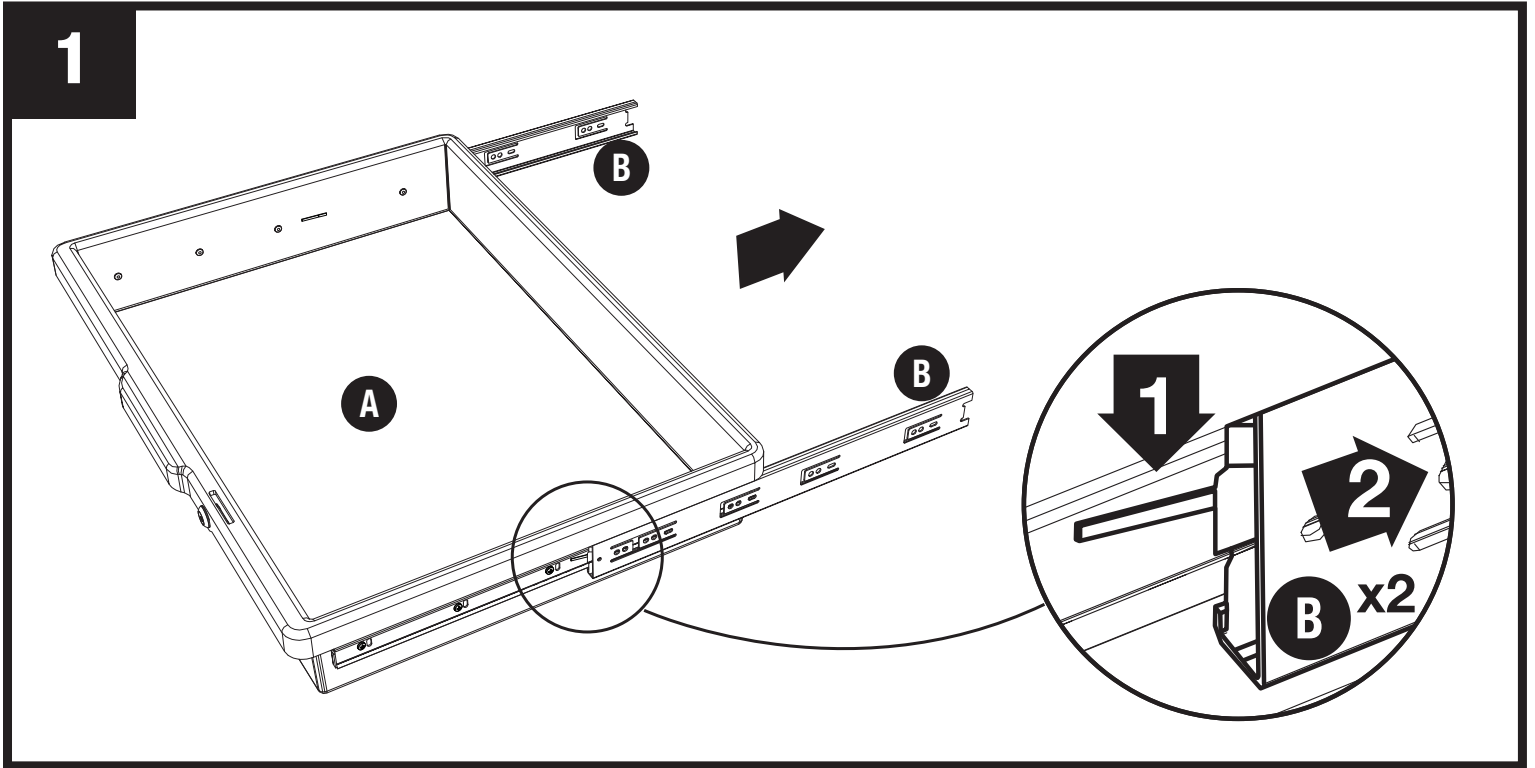
*Overall weight limit of items stored in drawer must not exceed 15 lbs/6.8 kg.

Drawer divider (F) is included. Place 3 long strips in drawer first with slots facing upward. Place 3 small strips over long strips so they inter-lock.

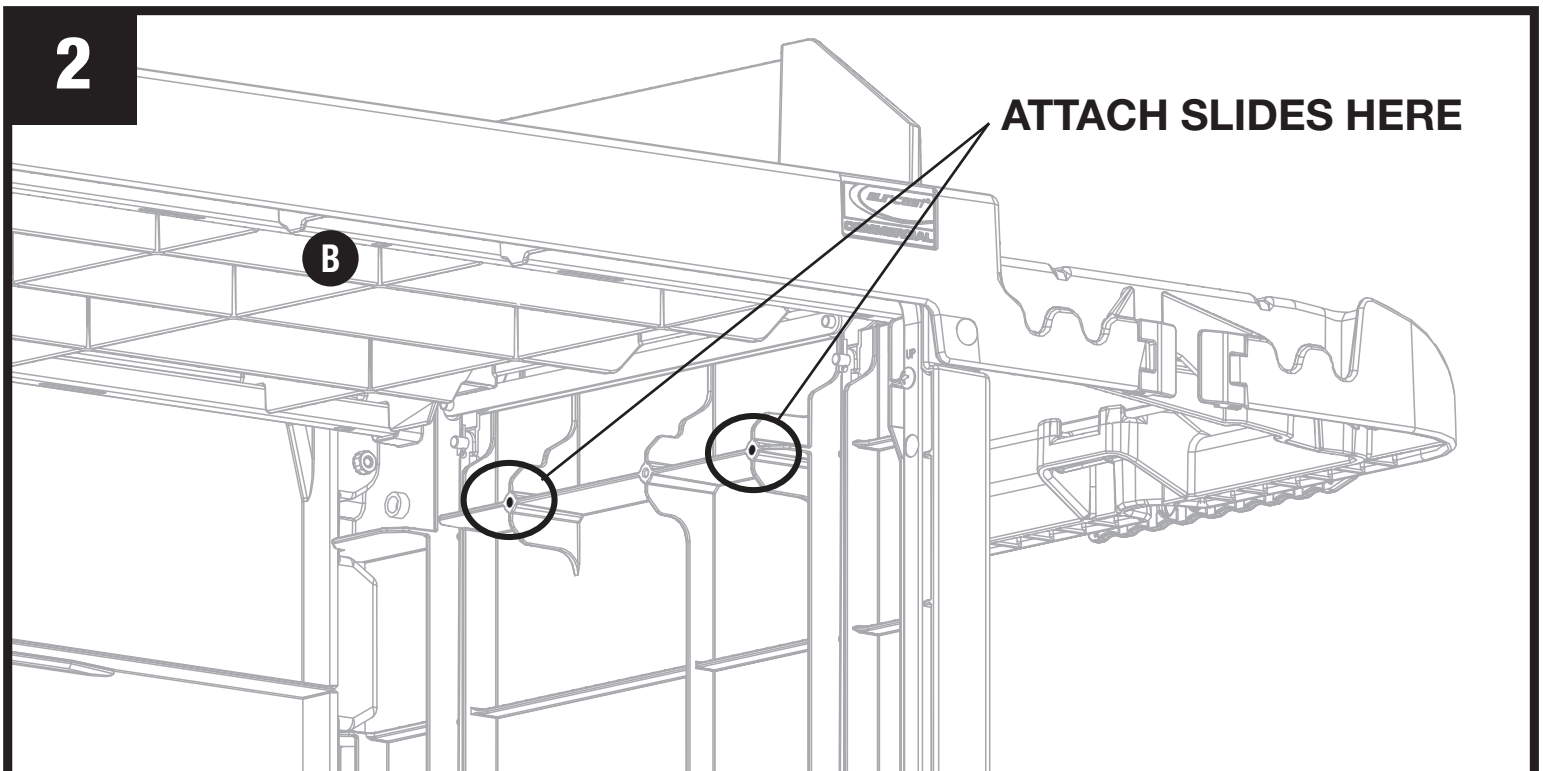


TOOLS NEEDED



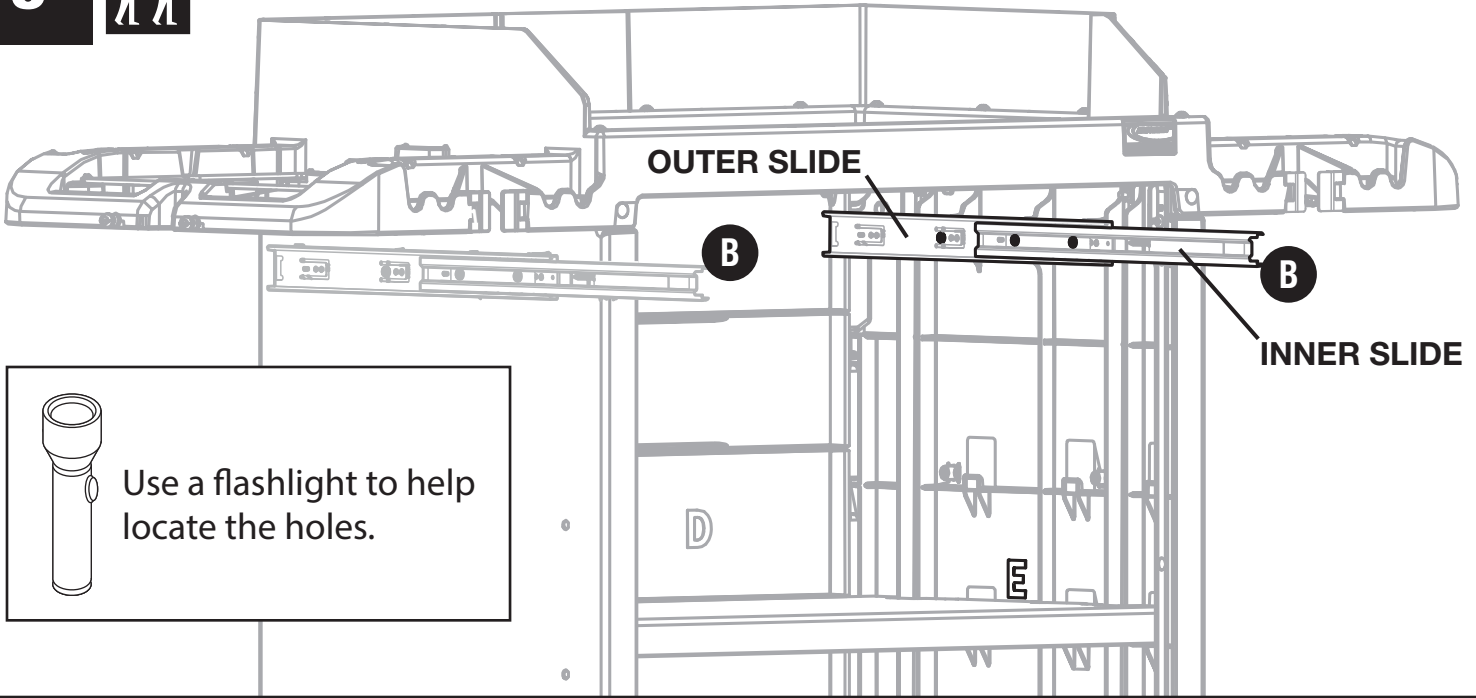


Pull drawer slides (B) out of drawer (A) as far as they can be pulled out. Push lever up or down to release drawer slide (B) from the drawer (A) completely. Repeat on the other side. Set drawer aside.



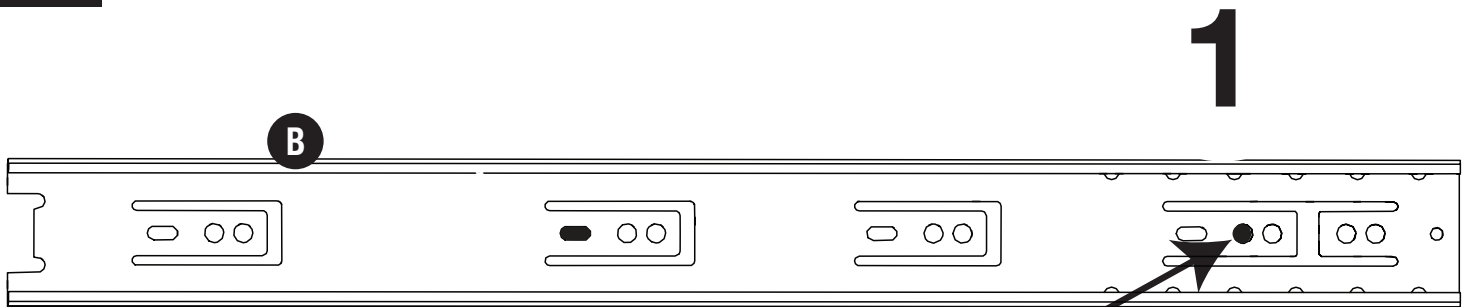
Screws will go through holes in slides and insert into these two hole locations on side panels.

3



Attach slides (B) into inside of panels as shown using three screws (E). **IMPORTANT:** Slide away inner slide to expose appropriate screw holes. See step 4 for correct screw locations.

4a

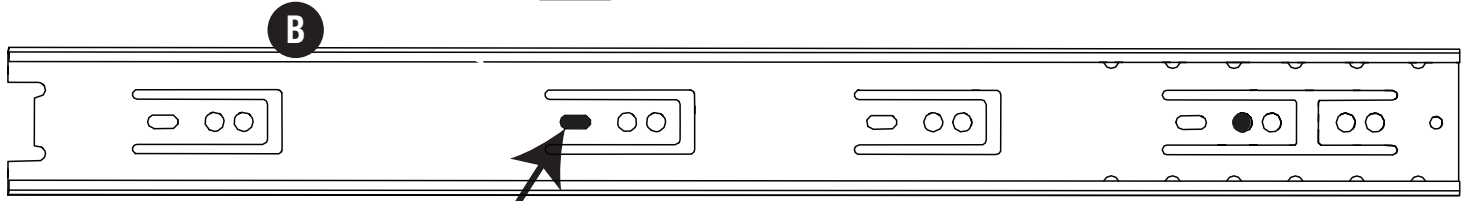


Use this hole to first mount front location

IMPORTANT: Inner slide has been removed for clarity.

4b

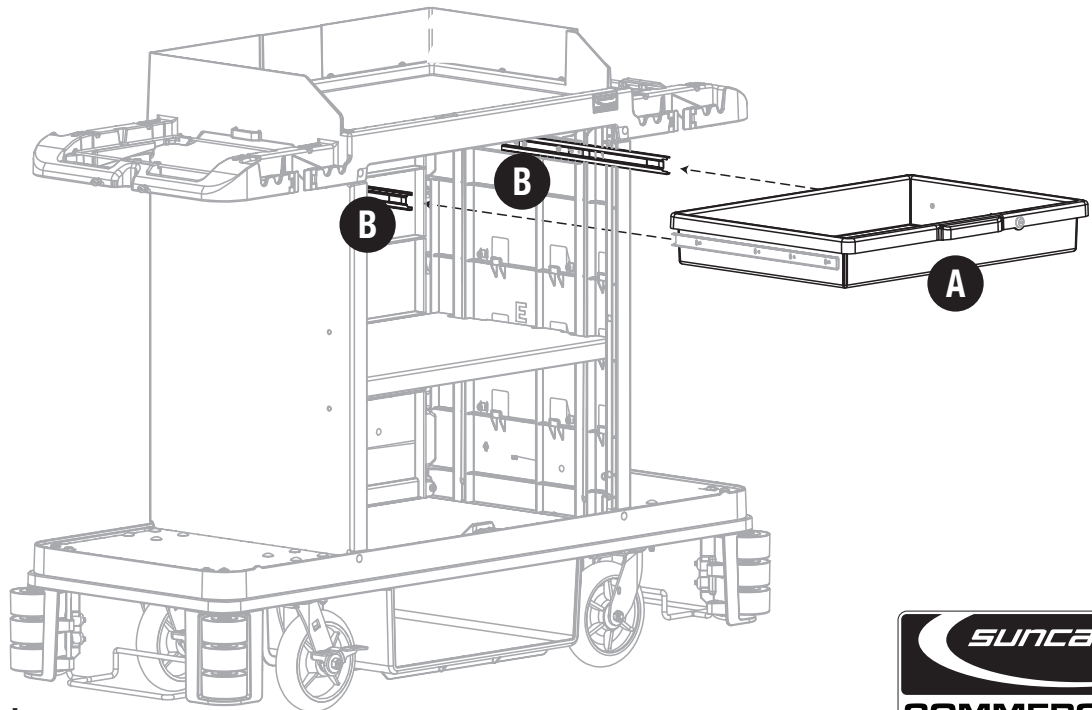
2



Use this hole to mount rear location second.

IMPORTANT: Inner slide has been removed for clarity.

5



HKC2000 is model shown



Pull slides (B) out of cabinet. Slide the drawer (A) into ends of drawer slides (B) located inside cart and slide all the way in to lock.